

Attention all care partners and visitors:

Do not enter hospital if you have one (1) of the following:



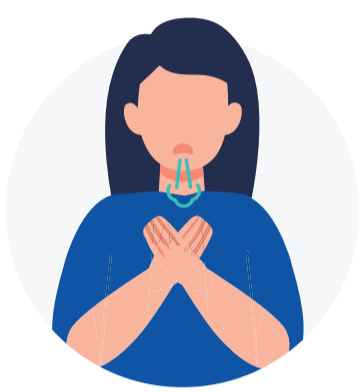
COUGH



FEVER



SHAKES OR CHILLS



DIFFICULTY BREATHING



DECREASE SENSE OF SMELL

Do not enter hospital if you have two (2) of the following:



When inside the hospital:

Everyone must wear a hospital issued mask while in hospital. Please exchange your mask prior to your visit.

Please clean your hands with hand sanitizer.

No food or drinks can be consumed inside hospital while visiting patients. Visitors may consume food in the Main Lobby or Wing D1, elevator lobby.

